

★ Alpine Sun ★

"Best climate in US by Government report."

VOL. 11, NO. 12 (262) ALPINE, CALIF. FRIDAY, JUNE 1, 1962 10¢

Gets Building Loan CofC Open Daily

One early advantage of water coming here is the start of building loans. Jack Hargens, 1593 South Grade Road, just secured one to build his home on a slightly knoll overlooking the entire area.

Mr. and Mrs. Hargens with their daughter Sybil and her young son Eric, have been living in the large garage, but in a few months will enjoy their lovely new home,

Since the Alpine Chamber of Commerce moved its own little office building onto the west side of Bailey's Cafe lot it has its own number on Hwy 80, 2121, and the same phone, 415-2722.

Mrs. Vera Behring, who daily except Thursday, and of course Sunday, from 1 to 5, is handing out and mailing a lot of literature on this area.



MRS. ELIZABETH WEST, NEW PERMANENT LIBRARIAN, ENJOYS CHECKING OUT BOOKS TO YOUNG LADIES; PHYLLIS HENRICK, KATHY LUTE AND JANE ARNOLD IN ALPINE'S COUNTY BRANCH LIBRARY.

SHE HAS BEEN SUBSTITUTING IN EC, LA MESA, LEMON GROVE, FLETCHER HILLS AND SMALLER BRANCHES SINCE 1958. HER HUSBAND DIED A YEAR AGO.

'We want more of your official weather summaries' she told the Sun this week, 'as we hand out more of those than anything else.'

Sen. Hugo Fisher has just appointed E.A. Horton, attorney, chairman of his re-election campaign committee.

THE FUTURE OF AMERICA DEPENDS UPON THE EDUCATION OF ITS YOUTH. VOTE YES JUNE 12TH.

ALPINE SUN

America's Tiniest Newspaper



HICKORY 5-2415 OR 2394

2255 Tavern Rd. Mail Rt. 1, Box 189

ALPINE, SAN DIEGO COUNTY, CALIFORNIA

PUBLISHED SEMI-MONTHLY ON FRIDAY
10¢ PER COPY, BY MAIL, \$2. YEARLY

CLARKE IRVINE, EDITOR & PUBLISHER
AOPA 194347

ALICE IRVINE, ART & COMPOSITION
OWNED BY HEALTH DEFENSE LEAGUE INC.

PRINTED AND PRODUCED ENTIRELY ON THE RANCH
All paid. Second class mail privileges
authorized at Alpine, California.

EST. JAN 1952. ADJUDGED FOR LEGAL ADS ON
11-12-59, IN SUPERIOR COURT, NO. 238120.

JACK & LEE'S

ALPINE CAFE

BREAKFAST, LUNCH & DINNER

Draft Beer

2225 Hwy 80 HI5-2990

1940 1962

SOLIMINE'S

Famous For

Italian Food

Charcoal Broiled Steaks

Open 7 Days A Week

8949 La Mesa Blvd. H09-0181

AERO DRIVE-IN

BOSTONIA HI4-8800

NOW THRU TUESDAY
PAT BOON
'STATE FAIR'

SWAP MEET EVERY SAT. & SUN
9 to 5, 35¢ a car.

RUST OKAYS COLLEGE

'Where can we put the tidal wave of graduating students hoping for higher education, for we will have 3 times as many in 1970 as we have today' was the admonition of Dr. Wm. C. Rust, president, California Western U at a rally in Grossmont HS last week, advising them to vote the \$7.5 million bonds to build a



facility for some 2400 students within two years!

He pointed out that a big part of the answer is 'the junior college system, a great 2-year preparation for university'

'He said that 25 years ago only about 5% of HS grads went on to higher learning, while now nearly 50% go for college.

'The need is for greater skills and knowledge in today's living' he concluded, 'to catch up and keep up. You in Grossmont area can do something about it on June 5'.

EL CAJON THEATRE

Hickory 4-3272

NOW THRU TUESDAY
ELVIS PRESLEY
'FOLLOW THAT DREAM'
'THE MAGIC SWORD'
STARTS TUESDAY
CARY GRANT
SOPHIA LOREN
'HOUSE BOAT'

SDG&E has Birthday

Sunday was the 75th year of continuous service of electricity to the county for the SD GAS & Electric Co., which started in 1887 as the Coronado G & E Co. Then it made current for 24 street arc-lights, only from dusk to midnight,

excluding moonlight nights! It had four 75-HP steam driven generators with only 30-light capacity. Cost then was 2¢ a lamp hour while today 2.81¢ gets a kilowatt hour capable of lighting 14 50-watt lamps!

Today this fine company boasts of four modern

power plants with 13 high efficiency turbo-generators capable of yielding 809,000 KW. They cost many millions and the firm is now building a second new 142,000 KW unit at its South Bay power plant soon to be operating. It has ordered a new 210,000 unit for 1964, the company's largest

NARCE PICNIC SLATED

Tomorrow at 1 in Flinn Springs Park the Civil Service Retirees, Chapter 669 are having their potluck picnic and all retirees are welcome.

to keep pace with the fast growth of SD County.

HOW FAR WOULD YOU GO TO SAVE \$4,000,000?

GO TO THE POLLS AND VOTE YES ON MEASURE "T"

BUILD GROSSMONT JUNIOR COLLEGE

Measure "T" Will Purchase the Site, Build and Equip GROSSMONT JUNIOR COLLEGE Which We MUST Have Now!

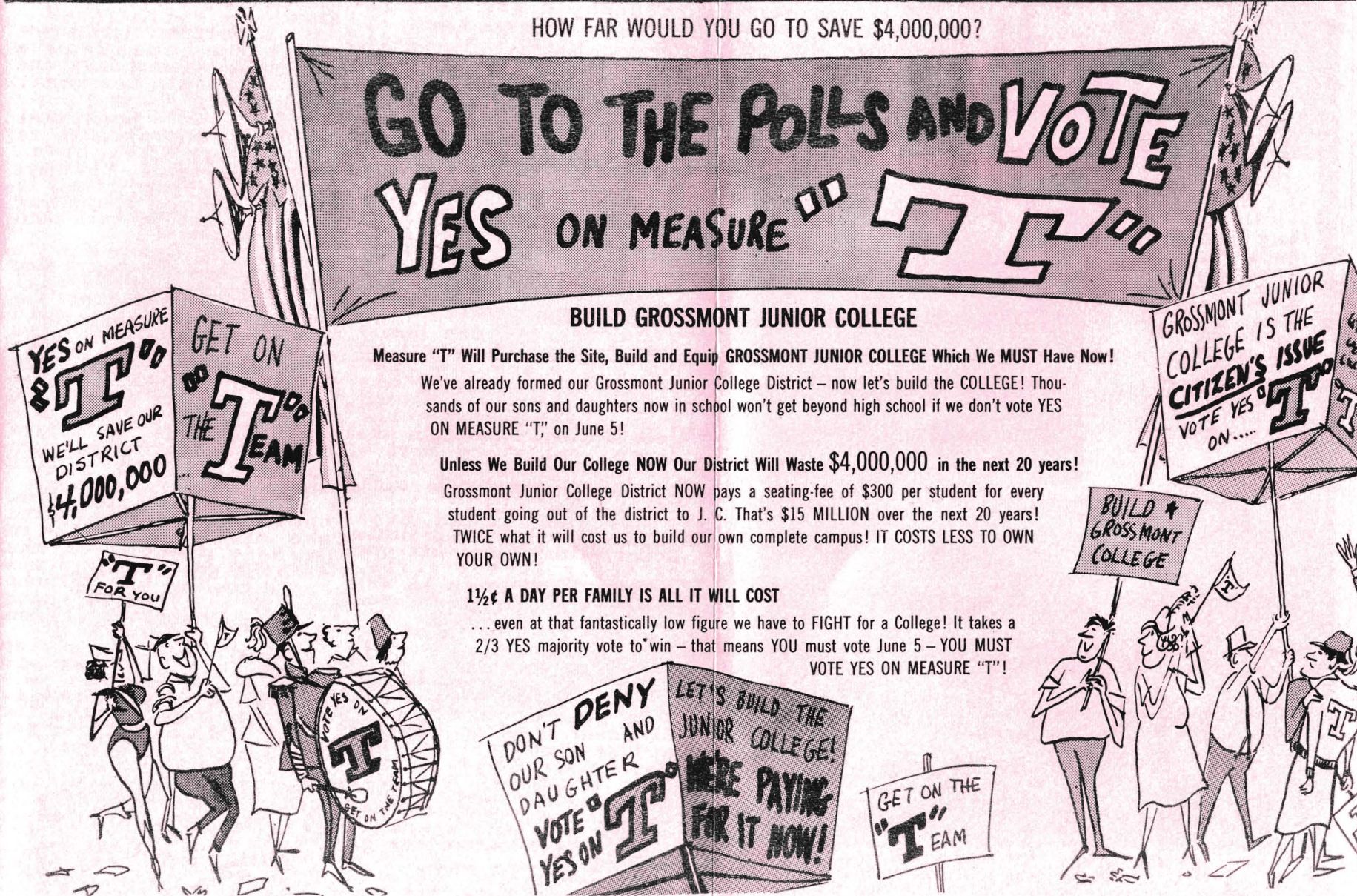
We've already formed our Grossmont Junior College District - now let's build the COLLEGE! Thousands of our sons and daughters now in school won't get beyond high school if we don't vote YES ON MEASURE "T" on June 5!

Unless We Build Our College NOW Our District Will Waste \$4,000,000 in the next 20 years!

Grossmont Junior College District NOW pays a seating-fee of \$300 per student for every student going out of the district to J. C. That's \$15 MILLION over the next 20 years! TWICE what it will cost us to build our own complete campus! IT COSTS LESS TO OWN YOUR OWN!

1½¢ A DAY PER FAMILY IS ALL IT WILL COST

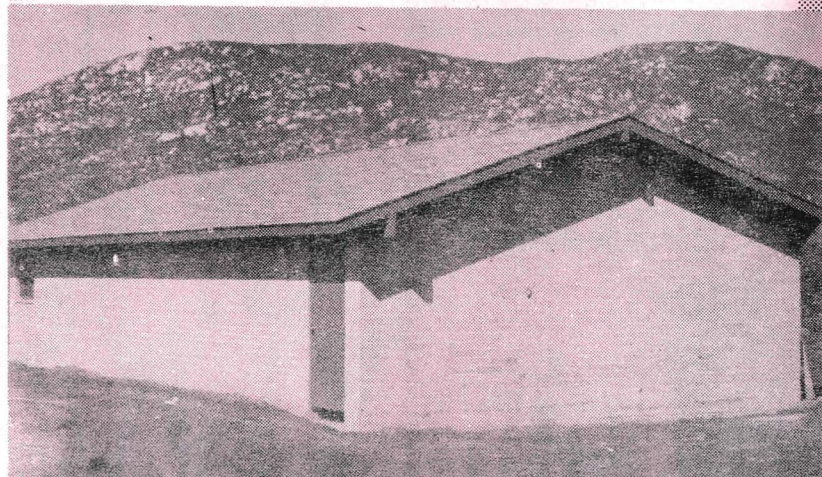
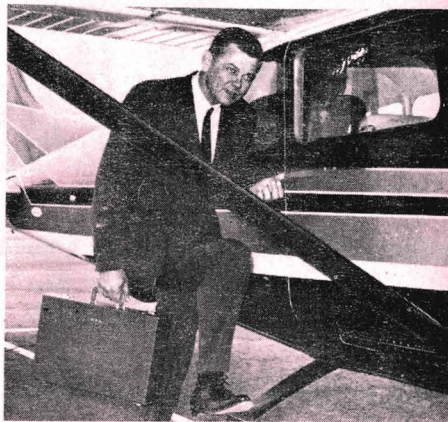
... even at that fantastically low figure we have to FIGHT for a College! It takes a 2/3 YES majority vote to win - that means YOU must vote June 5 - YOU MUST VOTE YES ON MEASURE "T"!





MRS. ROBERT FRENZEL, RETIRED ALPINE SCHOOL TEACHER AND DAUGHTERS DION AT LEFT AND VONA, HUSBAND BOB IS WITH THE FORESTRY.

HALE ASHCRAFT REPUBLICAN CANDIDATE FOR 80TH ASSEMBLY DISTRICT IS A FLYING ENTHUSIAST AND DEEPLY INTERESTED IN DEVELOPMENT OF AIRPORT FACILITIES FOR SD COUNTY.



THIS IS NOT ALPINE JAIL, BUT PUMPING STATION FOR WATER AT ARNOLD WAY NEAR HARBISON CANYON ROAD. COMPLETE WITH HUGE PUMPS, DUE TO START OPERATION SOMETIME THIS MONTH.



SMALL TALK

By Cynthia Irvine

Age 13, 8th Grade

This has been kind of an exciting week for us. First of all my sister's horse Chacho went out looking for my horse Smokey and Mama's horse Dixie and 11 o'clock Saturday night when he couldn't find them at McCall's he started to come home. One of those little foreign cars was coming along and didn't see him and hit him right in the back legs. Chacho was so lucky and so were we. He didn't get hurt enough to call a vet and the car had only dents. Celeste hasn't been able to ride him but he should be in good shape by this week-end. He sure can kick at the other horses if they try to take his food away. We are all so happy it wasn't worse.

And then Sunday Daddy was running some stuff on the press and his hand slipped and two of his fingers on his right hand went right through the gears. It cut through his finger nails and hurt a lot but Mama bandaged him up and he thinks he will be ok.

Sunday night at Miss Burdett's recital Blanche McCall told Mama that one of their little girls, Mary Toon, who is 11 was climbing over a fence and slipped. She broke two bones in her foot and has it in a cast.

When we were coming home from Sunday School we saw Shirley Bittner of Jolly Kone sitting in front of Dinosaur Land in her car and we wondered what was the matter. When we got home we phoned and sure enough, someone had skidded into her car and wrecked the bumper and wrenched Shirley's arm but she is ok now.

It seems like there is a lot of sad news this week

Bary McCall's little toy poodle has had an infected ear and his mother thinks she has a cold in it but will take her to a vet to be sure.

Wayne Hayward is back in school after being gone for quite a few weeks. He has had hepatitis real bad. And Timmy Rowan had to go to the doctor because he has had a bad case of the flu.

Susie Bittner bought one of Cathy Hermstead's Australian sheep dogs and they named him Lonesome. He sure is a cute pup.

Tommy Judd's donkey Al got loose and came up to visit Mark Creaghe's donkey. He spent two days there and rather liked it but when Tommy found out where he was he came and got him.

Ruthie and Brucie McKie's dad bought a new black and white pinto. He is real nice. They sold Star who used to belong to David Fox to some people down in El Cajon.

Be sure to call me ahead of time and make reservations for our moonlight ride and dinner on June 18th. HI5-2394. We should have nice weather by then and it will be a full moon, too.

Blanche McCall told Mama that Mike and Hans Kern who are in the army in Germany phoned her the other night and they all had a good visit. Blanche was so thrilled to think they would do that from Europe!

Nancy Sockwell's sister Sue is going in the air force as soon as she graduates from El Cap. She has taken all of the tests and is ready to go.

I have a new girl in my class and she came from Denver, Colo. with her two sisters. Her name is Barbara Curt. Her dad is up at Mt. Laguna in the

Lynn and Mark Creaghe's Daddy just bought 100 baby chicks to raise for fryers.

OLDTIMERS VISIT AREA

Former Alpine photographer Henry Nelson, now of Las Vegas, dropped in to visit the Sun, for which he used to make pictures, just to say howdy. He was here with friends of over 30 years ago in SE, Mr. and Mrs. A.M. Hurst, Lakeside.

They came here in 1906. He drove the old Pickwick Motor Stage on Hwy 94, making two trips weekly to the valley, started the first freight line, then made it day and night.

'I still love Alpine and may come back to live here' says Nelson, a veteran of War I who was in the motorcycle squad, severely injured when he flew over 100 feet in an accident that threw him.

Letter To Editor

Dear Sir: We live in San Diego and contemplate a move to Alpine. We have two daughters who would attend school there. Enclosed is \$1. for a six months subscription to the Sun so we may learn of your community, its weather, schools, stores, and so on. Thank you very kindly for your help. Sincerely-- Mrs. L.A. Jirak.

ANIMAL PLAYERS GET AWARDS

'Mister Ed,' that wacky Palomino that stars with Alan Young, to whom he talks exclusively, and 'Cat,' the feline of 'Breakfast at Tiffany's', won the nation's top animal actors' 1961 awards, voted by TV editors all over the US.

Note- Mr. Ed is one of the best programs on TV, and we wish they had more of that type instead of the mayhem features. Likewise we'd rather see films like 'Sundowners' instead of 'The Hustler' and others of that ilk. Ed.

AT SOUTHLAND YOU ENJOY

INSURED SAFETY

By a direct agency of the United States Government



ALSO YOUR ACCOUNT EARNS A BIG

4.6%

INTEREST - Current Rate Per Annum Computed Monthly paid every December, March June and September.

Funds Placed by Monday
June 11th Earn from the 1st

PLANNING TO BUY, BUILD,
MODERNIZE OR REFINANCE?

We provide experienced Counsel to save you money. Payments can be surprisingly low to fit your monthly budget.



Head Office LA MESA
8347 La Mesa Boulevard
HO 3-4441

EL CAJON
234 North Magnolia
HI 2-8811

LEMON GROVE
7770 Broadway
HO 3-8871

MEMBER FEDERAL HOME LOAN BANK SYSTEM

EDITORIAL

CARPENTER IN ORBIT WAS JUST A BUSY, BUSY PILOT!

We think that Scott Carpenter, the intrepid navy officer, who took his Aurora 7 thrice around our planet, deserves an apology for the early report that he was 'a tired and confused astronaut' on his third orbit when making his checklist for reentry. As an earthbound pilot of a light airplane, we know what it is to be busy

on a checklist, especially if one is low on fuel, as he was. There should have been a censor on news reports, so that it would not have made him seem confused, till he explained it at his very thrilling press conference.

Carpenter executed his duty in splendid form like the other fine men who went aloft-- studied, worked, trained, sweated it out, risked his life, and made a perfect landing! He has given astronomers food for thought for some time to come, as he put it.-CI

Dr. I. Arbital

Optometrist

COMPLETE EYE CARE INCLUDING CONTACT LENSES.

ALPINE OFFICE HOURS
TUES. & FRI. 9-6

HI5-2345 1330 W. VICTORIA

J. H. McKie, Jr.

REALTOR

2355 HIGHWAY 80

P.O. Box 398 ALPINE, CALIF.

HICKORY 5-2217

**CHAR-BROILED
STEAKS** \$1.45 & Up

Eastern Beef

LOG CABIN CAFE

2205 Hwy 80 HI5-2243

FLORENCE'S MARKET

Owned & Operated by Florence Clarke

Groceries - Meat - Fresh Vegetables - Liquor

2262 Highway 80

Hickory 5-2436

Alpine

Alpine Weather Records

Climate, Temperature and Rainfall

Prepared by C. Robert Elford

Weather Bureau Office, San Francisco, California.



Presented as a Public Service by the Alpine Sun

CLIMATE OF ALPINE, CALIFORNIA

Alpine is about 25 miles from the ocean in hilly country sloping gradually upward to the east. The elevation ranges from around 1400 to 2000 feet. Viejas Mountain, 4224 feet, rises about 5 miles northeast of the city. The crest of the mountains, around 6000 feet, is 15 to 20 miles farther east. El Capitan reservoir is about 5 miles northwest and 1000 feet lower.

The southerly latitude of Alpine, combined with its relative proximity to the ocean, results in an equable temperature regime. The average maximum during July, the warmest month, is just over 90°, while the average minimum during January, the coldest month is about 37°. High temperatures during the summer, however, occasionally reach well above 100°, a record 110° having been recorded in September, 1955. Even in winter it is possible to have maximums in the 80s. Readings of 90° or higher have been recorded 60 days per year, on the average. The minimum has dropped to as low as 18° in January of 1937, and sub-freezing temperatures have been reported at one time or another during each month from October through April. On the average there are 27 days per year with temperatures of 32°

or below. There have been occasions when extreme temperature conditions have persisted for long periods. In July, 1959, for example, the maximum reached 90° or higher on 28 days. At the other extreme was January, 1937, when freezing temperatures were recorded on 22 days.

The average annual precipitation amounts to 19.82 inches, but only 0.38 inch of this falls during the months of June, July, and August. More than 16 inches falls from December through April. A total of more than 6 inches of rainfall in a 24-hour period has been reported. This fell within a 13-hour period, and consideration of other available data indicates that amounts up to 7.50 inches in 24 hours might be expected as often as once in 100 years. Snow is infrequent, although it has been reported on several occasions. Hail falls at times in connection with thundershowers.

Clear skies are the rule during much of the year. Averages show about 254 days to be clear, 51 partly cloudy, and only 60 cloudy.

While relative humidity records are not available, a study of other nearby reports would suggest that readings

Please see back page.

U. S. DEPARTMENT OF COMMERCE, WEATHER BUREAU
IN COOPERATION WITH THE ALPINE SUN
CLIMATOGRAPHY OF THE UNITED STATES NO. 20 - 4.

CLIMATOLOGICAL SUMMARY

STATION Alpine, California.

LATITUDE 32° 50' N
LONGITUDE 116° 47' W
ELEV. (GROUND) 1735 feet

MEANS AND EXTREMES FOR PERIOD 1935-1945 1952-1959

Month	Temperature (°F)			Mean degree days **	Precipitation Totals (Inches)						Mean number of days		
	Means				Greatest daily	Mean	Maximum monthly	Year	Snow, Sleet		Precip. 10 inch or more or 90° and above	Temperatures	
	Daily maximum	Daily minimum	Monthly						Max.	Min.		32° and below	32° and below
	Record highest	Record lowest	Year						Year	Year		32° and below	0° and below
(a)	17	17	17	17	18	18	18	18	18	18	17	17	17
Jan.	63.1	37.2	50.2	460	3.09	3.03	3.03	18	1937	T	18	T	0
Feb.	63.3	37.5	50.4	410	4.29	6.03	6.03	18	1937	T	0	0	7
Mar.	66.3	39.0	52.7	380	3.78	2.50	2.50	18	1944+	T	0	0	5
Apr.	69.5	42.3	55.9	270	2.13	2.46	2.46	18	1938	T	0	*	0
May	75.1	45.8	60.5	160	0.58	1.15	1.15	18	1938	T	0	0	*
Jun.	82.4	48.7	65.6	50	0.12	0.53	0.53	18	1937	T	0	0	0
Jul.	90.7	55.6	73.2	0	0.07	0.21	0.21	18	1937	T	0	0	0
Aug.	89.7	56.1	72.9	0	0.19	1.25	1.25	18	1945	T	0	0	0
Sep.	88.1	53.7	70.9	20	0.43	1.79	1.79	18	1939	T	0	0	0
Oct.	79.9	47.7	63.8	70	0.81	1.24	1.24	18	1957	T	0	0	0
Nov.	73.2	41.7	57.5	240	1.03	3.02	3.02	18	1944	T	0	0	0
Dec.	67.0	39.3	53.2	370	3.30	4.43	4.43	18	1944	T	0	0	0
Year	75.7	45.4	60.6	2430	19.52	6.03	6.03	18	1937	T	19.52	32	60

(a) Average length of record, years.

T Trace, an amount too small to measure.

+ Also on earlier dates, months, or years.

* Less than one half.

** Base 65° F (Estimated).

Average Temperature (°F)

Year	Jan.	Feb.	Mar.	Apr.	May	June	July	Aug.	Sept.	Oct.	Nov.	Dec.	Ann'l
1935	---	52.7	49.6	57.4	59.4	66.0	72.8	75.0	71.0	62.2	55.0	53.4	---
1936	53.0	50.7	55.0	57.4	62.3	68.4	75.2	74.6	70.6	64.4	60.4	52.0	62.0
1937	40.7	49.0	57.8	55.1	60.2	64.6	72.6	73.8	73.4	66.2	56.7	54.4	59.9
1938	52.5	49.9	50.0	55.2	59.4	64.4	70.7	73.0	73.7	61.6	55.1	53.6	59.9
1939	48.2	43.8	50.7	57.2	58.9	64.2	70.2	72.4	69.4	61.8	57.6	55.5	59.2
1940	50.9	50.2	53.1	55.4	61.4	63.8	69.6	69.3	66.0	63.7	54.8	54.4	59.4
1941	48.2	51.0	51.6	51.5	61.5	61.0	69.8	67.5	62.0	59.5	56.5	48.2	57.2
1942	49.6	46.2	49.2	50.8	56.1	62.5	71.2	69.6	65.2	59.6	55.6	50.8	57.2
1943	48.6	50.2	50.6	53.2	60.0	61.8	68.6	69.6	71.3	61.6	57.5	48.0	58.4
1944	47.1	44.1	48.2	49.8	56.3	57.0	---	---	---	---	---	---	---
1952	---	---	---	---	---	---	---	---	---	68.8	54.2	50.8	---
1953	56.1	52.0	54.1	55.1	58.9	65.6	75.7	72.6	70.9	65.5	59.3	51.8	61.5
1954	48.7	57.3	51.5	58.4	62.3	66.6	77.6	71.4	72.4	65.5	60.9	52.2	62.0
1955	47.5	50.6	55.9	56.8	60.3	66.4	78.0	78.0	75.0	63.6	57.3	52.0	61.3
1956	52.2	47.4	55.3	55.7	63.2	69.6	71.0	71.0	76.8	61.6	60.6	54.1	61.8
1957	49.1	55.7	55.0	57.4	59.7	72.3	76.5	75.9	72.0	61.3	53.9	55.2	62.0
1958	52.3	54.7	51.6	59.2	65.8	68.1	72.0	76.6	75.1	70.1	58.2	60.6	63.7
1959	57.7	51.9	61.7	64.5	61.9	72.1	79.5	76.2	71.9	69.2	64.1	56.4	65.6
1960	50.0	51.7	59.2	62.0	65.6	73.0	79.8	75.6	77.8	65.7	57.3	53.4	64.3
1961	57.8	56.7	54.7	61.6	60.5	71.4	74.6	75.4	70.2	64.5	55.6	51.0	62.8

Total Precipitation (Inches)

Year	Jan.	Feb.	Mar.	Apr.	May	June	July	Aug.	Sept.	Oct.	Nov.	Dec.	Ann'l
1935	4.05	5.10	3.01	2.24	0.23	0.0	T	0.82	0.95	0.21	0.22	1.34	18.17
1936	0.52	9.02	3.53	1.56	0.44	T	0.33	0.19	0	1.94	0.17	8.27	25.97
1937	5.30	11.66	4.84	1.27	1.05	0.54	0.21	T	0	0.19	2.22	27.28	
1938	3.15	4.91	8.25	1.52	1.04	0	0.02	0.02	0	0.86	0.04	7.16	26.97
1939	3.60	3.28	2.87	0.85	0.29	0	T	0.02	4.91	0.61	0.78	0.77	18.28
1940	4.39	4.83	1.26	3.24	T	0	0	0	0.11	1.98	0.91	10.31	27.03
1941	1.78	4.76	8.66	8.01	0.62	0.05	0.12	0.08	0.50	3.19	1.14	4.70	33.92
1942	0.36	2.22	2.78	3.18	0.06	0	0	T	0	0.67	0.58	1.95	11.80
1943	6.82	2.51	4.72	3.35	0.11	0.45	0	0.01	0.06	0.72	0.05	5.51	24.31
1944	2.01	7.31	2.02	1.53	0.30	0.17	0	T	0	0.03	6.78	1.35	21.50
1945	0.76	3.86	6.88	0.49	0.07	0.34	0.40	1.98	0.80	0.15	0.75	8.25	24.37
1952	---	---	---	---	---	---	---	---	---	0	3.70	3.02	---
1953	1.13	1.50	1.98	1.25	0.91	T	0.40	0	0	0	0.96	0.24	8.01
1954	5.40	1.95	7.66	0.18	0.19	0.09	0.30	T	0	0	0.94	0.94	17.17
1955	4.29	4.61	0.80	0.47	2.52	0	0.11	0.16	0	0.03	1.07	1.41	13.22
1956	3.19	1.19	0	2.88	0.12	0	0.06	0	0	0.69	0	0.84	8.27
1957	7.18	0.82	1.46	1.59	2.13	0.43	0	0.02	0	3.86	0.91	1.72	20.12
1958	1.33	3.89	7.23	4.27	0.36	T	0	0.15	0.33	0.50	0.50	0.07	18.18
1959	0.35	9.39	0.03	0.47	0.02	0	T	T	T	0.03	0.07	2.60	10.27
1960	1.1	4.1	0.66	2.01	0.89	0.00	0.90	0	0.02	0.20	2.22	Tr.	13.78
1961	1.03	0.22	2.35	0	T	0.02	0	0.36	0.03	0.92	0.97	2.22	7.82

STATION HISTORY

The first Weather Bureau records for Alpine were taken between February 1, 1935, and August 31, 1945, by Harold L. Flegal, at his vineyard about $\frac{1}{4}$ mile southwest of the post-office. The elevation was given as 1900. The instruments for this station were furnished by the Chamber of Commerce. The more recent data used in this summary were obtained from a point $\frac{3}{4}$ mile west of the post-office at an elevation of 1700. The records at this location were started on October 2, 1952, by Ernest W. Wright and were continued to December 1958. Here the shelter was still the property of the Chamber of Commerce, but the thermometers and rain gage were furnished by the Weather Bureau.

Beginning in December 1958 the station has been operated by the Fire Department, with Robert Fey as the observer. The location is $\frac{1}{2}$ mile west of the postoffice at an elevation of 1735 feet.

There are also records

available from two other locations in the area. From May 1951 to Oct. 1952 observers were H.E. Aston and Marion C. Aston. Their station was about 1.2 miles north northeast of the postoffice, at 2260 feet. R.E. Gastil took observations from January 1950 to May 1951, but we have no information concerning the location and exposure of this station. Because of the higher elevation of the Aston station and doubt about the location of Gastil's we have not included these records in this summary. The wisdom of combining the Flegal and Wright records might be debated, but it has been done in order to provide a long enough record to make a useful summary.

Most of the Alpine records have been published currently in the California section of the Weather Bureau's Climatological Data. The original manuscript copies, for the most part, are on file in the Weather Bureau Office in San Francisco.

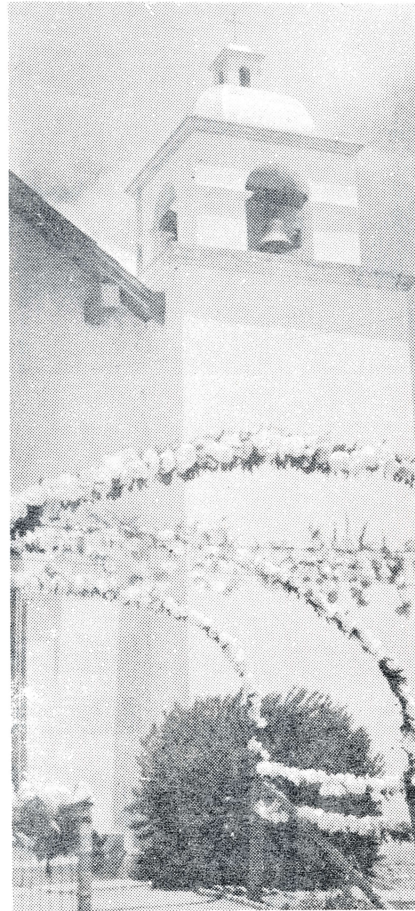
More about Alpine Climate from Page One.

during the summer would drop into the 30's most afternoons and rise to the 60's at night. Winter readings are somewhat higher. Occasionally very dry conditions are reported when east and northeast winds prevail over southern California. These situations may develop at any time, dropping humidities to 10% or lower, but they are most likely during the late fall or early winter months.

The prevailing wind direction is from the southwest, northwest and west winds are also quite common. While the average speed is probably quite light there may be occasional strong winds associated with thunderstorms or with the more widespread storms of winter. Also, the infrequent east winds may

at times reach great enough speeds to cause slight local damage.

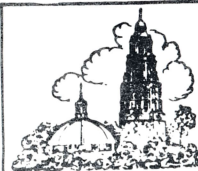
The last 32° temperature of the spring occurs early in April, on the average, while the first freezing temperature in the fall can be expected near the end of November, giving the average length of the growing season of about 235 days.



GARLANDED CANOPY MADE LOVELY ENTRANCE FOR PROCESSION AT SUNDAY'S CROWNING CEREMONY AT VIEJAS CHAPEL. LADIES MADE ALL FLOWERS, DID WORK IN AND OUT OF EDIFICE.

"Which weeds are the easiest to kill?" asked the young man from the city, as he watched Farmer Jones at work.

"Widows' weeds," replied the farmer. "You have only to say, 'Wilt thou?' and they wilt."



HELEN THOMSEN'S
Cafe del Rey Moro

OPEN EVERY DAY
NOON TILL 8 PM
BE 4-2161

ACCOMMODATIONS FOR
LARGE AND SMALL
PARTIES AND BANQUETS

House of Hospitality
San Diego, California



KEEP JOHN

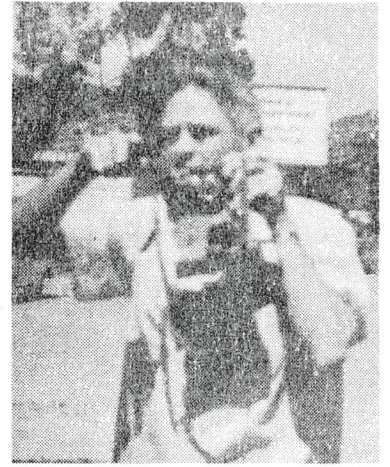
McQUILKEN ASSESSOR

- EXPERIENCED**
- IMPARTIAL**
- EFFICIENT**
- QUALIFIED**

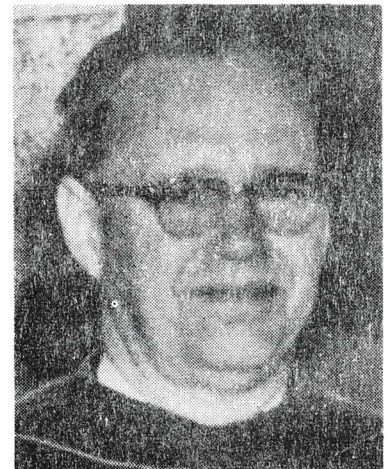
The following distinguished citizens of San Diego County represent a partial list of those who have endorsed John McQuilken for County Assessor . . .

- | | | | |
|----------------------|----------------------|-----------------------|--------------------|
| Louis Dalesandro | Norman L. Vetter | Orien W. Todd, Jr. | Maria Feigel |
| Elmer Glaser | Ray A. Wilcox | Earl Ben Gilliam | Roy W. Saarni |
| Robert S. Gleason | Clayton N. Tozer | Dan Moss | Marion W. Doirs |
| Russell Grosse | Walter R. Beck | Adele C. Fay | O. A. Cumming |
| Walter Johnson | F. M. Jones | Charles A. Taylor | George B. Ramstead |
| Maynard E. Julson | Rupert Stone | Mrs. John Paul Stone | D. B. Brotherton |
| James F. Richardson | Floyd Cunningham | Dr. J. J. Kimbrough | Burton D. Brant |
| Franklin L. Barnes | C. P. Martin | Cy Greaves | Bob Stephen |
| Oscar A. Luef | Florence Chambers | Norman Foster | Fred C. Hinrich |
| Charlotte M. Holcomb | Clayton Jack | H. Philip Anewalt | Dewey W. Kelley |
| Frank Rettig | Rexford L. Hall | Robert Breitbard | Mary A. Finnagan |
| Harold D. Wright | Hart Dunham | Joseph E. Dryer | Jacob Feigel |
| Otto A. Gerth | Margaret Lashlee | Otto W. Hahn | Stanley Davis |
| Lester Clark | Dr. Harvey Urban | Graydon S. Hoffman | Ethelda Sawday |
| Paul T. Mannen | Walter DeBrunner | William C. Moeser | Lawrence A. Daley |
| Archie J. Hicks | Harry D. Hall | Mrs. O. Lee Knief | Chas. Mendenhall |
| Nathan Eggert | Dr. Al Anderson | Samuel Addleson | Warren K. Hooper |
| Dick Chase | John Quimby | John S. Campbell, DDS | Joe Allard |
| Mary Buck Farrow | Ted Patrick | Edwin J. Thompson | W. B. Hughes |
| William W. Rogers | Barbara Lang Hayes | Vida A. Ruby | Wes Kennerly |
| Paul Sloop | Patterson N. Hyndman | | Mario Riberio |

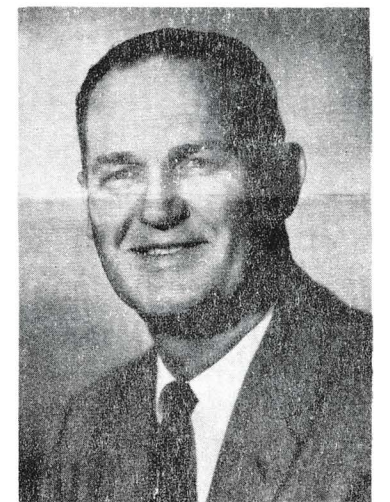
Men of Note



POSTMASTER Phil Hall, who is native of England, active in civic affairs, is ardent cinema fan, was snapped as he made movie of Hwy 80 work one noon recently. With Mrs. Hall, who assists in PO, he returned from recent convention.



MINISTER Dr. Roger Larson of Community Church, who hails from Oregon, has worked hard to build local religious work under congregational banner. Usually spends vacation with mother up in Portland.



GENIAL Milton Paris of EC, head of Paris Mortuary, which has served back country for many years, is top bowler in SD area, has won many fine trophies. His work in community is aided by Mrs. Paris.

TV Trouble?

CALL YOUR RELIABLE
Sylvania Serviceman

You receive;
* Dependable Service
* Honest Prices
* Quality Parts

H15-3885
GEORGE LENGBRIDGE



ELECT ELMER JANSEN SHERIFF

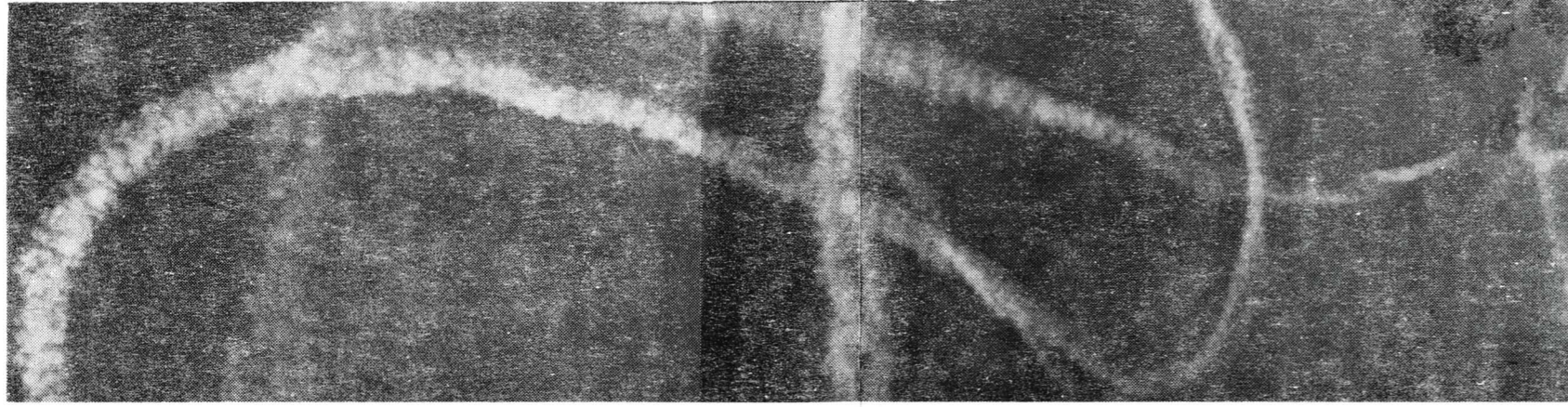
- 30 YEARS EXPERIENCE • PROVEN ABILITY
- ABLE ADMINISTRATION • UNQUESTIONED INTEGRITY

The unmatched record of ability as a law enforcement officer of Elmer Jansen firmly establishes him as the man most qualified to be Sheriff of San Diego County.

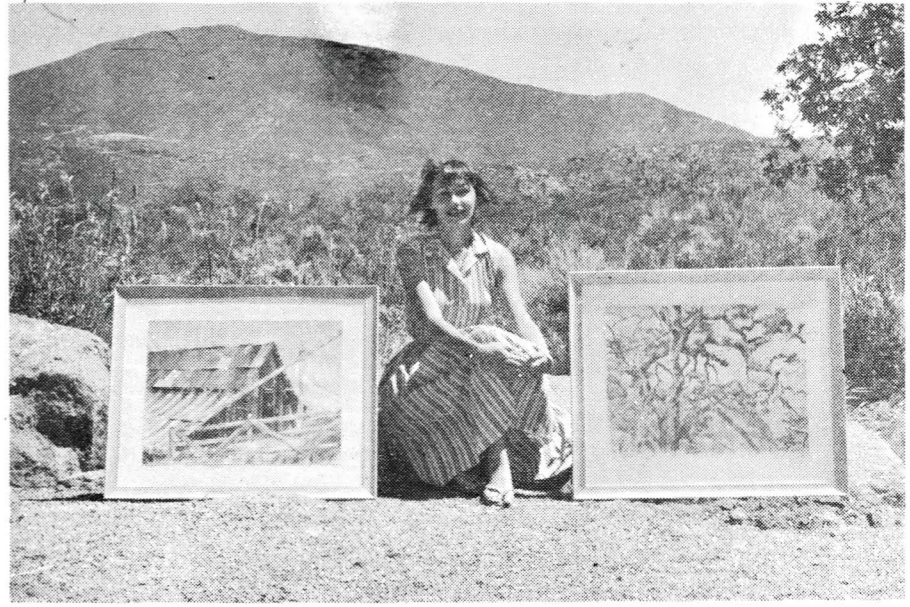
COMMENDED BY FEDERAL
AND STATE AUTHORITIES

PRIMARY ELECTION JUNE 5, 1962

JAMES F. MULVANEY, CHAIRMAN, JANSEN FOR SHERIFF COMMITTEE



DO NOT BLAME SMOG AL TOGETHER ON CARS! THIS SUN PHOTO SHOWS HOW JETS SULLY THE ATMOSPHERE AIRLINERS AND OTHER AIRCRAFT LEAVE SMOKE IN THE AIR, PLUS BILLIONS OF CIGARETTES! AND NOW COMES THE MISSILE SMOKE. COUGH MEDICINE, ANYONE?



ARTISTS LOVE ALPINE FOR ITS MANY SCENIC BEAUTIES. HERE IS SYBIL HARGENS AND TWO OF HER WATER COLORS. AT LEFT IS OLD BARN ON ROAD TO JULIAN, AT RIGHT, ANCIENT GNARLED OAK AND BOULDERS ON THEIR PLACE, 1593 SOUTH GRADE ROAD.

JEANETTE C. HINKLE
Real Estate & Insurance
CASUALTY & FIRE

2101 Hwy 80, Alpine, HI5-2502

FOR COMPLETE
Notary Service

See R. G. PARRISH At

ALPINE REALTY

1911 Hwy 80

HI5-2000

FREE

WITH THIS COUPON

Quart of Root Beer

With Purchase of

4 HAMBURGERS for \$1.

Jolly Kone Drive-In

2442 Hwy 80

Alpine

HI5-3193



This week's storm that backed up from Nevada dropped over half an inch of fine rain on this area--better late than less!

ANNUAL RECITAL PRESENTED BY MISS RUTH BURDETT, PIANO TEACHER, AT HER HOME SATURDAY NIGHT WAS ENJOYED BY PARENTS OF YOUNGSTERS PARTICIPATING. TOP ROW, CYNTHIA IRVINE, SUSAN ZIEGLITZ, LINDA TYLER. BOTTOM ROW, CELESTE IRVINE, DENISE HAUENSTEIN, SANDY SMITH AND CECILE IRVINE.

ELECT



JACK SCHRADER

STATE SENATE

Paid Political Advertisement

BORNOWSKIS RETURN

A delightful fortnight's vacation has just ended for Dr. and Mrs. Frank Bornowski, 1981 Arnold, who drove in from Downeyville where they visited friends. 'We stayed in their motel by a lovely river' he said 'and it was most beautiful, the whole trip was fine'. They went into the High Sierra, saw Lake Tahoe, visited his sister in Santa Rosa, and stopped in San Francisco and LA, clocked 2000 miles.

DEADLINE, SIR!

Due to this week's extra of the Sun, next regular issue will be June 8, with deadline Monday, June 4, so please get your ad and news copy in then or before.



AMONG MANY ATTRACTIVE NEW RANCH SIGNS AROUND ALPINE IS THIS IN THEME OF OLD RED BARN AT CHAS. SMITH'S PLACE WHERE HE IS NOW BUILDING SWIMMING POOL TO BE READY WHEN WATER ARRIVES.

WHEN LOOKING FOR FAULTS, USE A MIRROR, NOT A TELESCOPE.

IF KIDS COULD VOTE!

The Citizens' Advisory Committee for Alpine Schools has mailed to all voters a detailed 'Count Down' bulletin on the tax election here for Tuesday June 12, which you should study--then vote for the rate increase.

'Children cannot speak for themselves', it says, and 'voting school taxes is an investment in people. Young America comes first! Because we must recognize that America's future is in the hands of the younger generation. Don't gamble with it!'

**WE NEED LISTINGS
ALPINE BRANCH**

LA MESA REALTY CO.
BILL BROWN, Mgr.

2237 HWY 80

HI 5-3603

**BIG OAK SPRINGS
RESORT**

HI 5-3867

GROUP OR INDIVIDUAL PICNICS
RECREATION AREA HEATED POOL
TRAILER SITES TENT CAMPING

Paul and Iva Estep

5 MI E OF ALPINE ON OLD HWY 80



VALLEY HEALTH FOOD STORE

Fresh Stock Just Arrived

Including Tigers Milk & Cookies, Cold Pressed Safflower caps & Hoffman's HI-protein powder & tablets

133 Prescott, El Cajon HI4-8447 W.L. Houghton, owner

ENT. AS 2ND CLASS, ALPINE, CAL.

Alpine's Fine Weather

FROM OFFICIAL US STATION HERE

HIGH 79, AVE HIGH 67

LOW 42, AVE LOW 44

RAIN .52, SEASON 16.80

ELEV. 2000 FT. POPULATION 3258

WHERE THE SUNSHINE SPENDS THE YEAR

SUBSCRIBE TO THE SUN
ONLY \$2. A YEARA DIAMOND IS JUST A PIECE OF
COAL THAT STUCK TO ITS JOB.

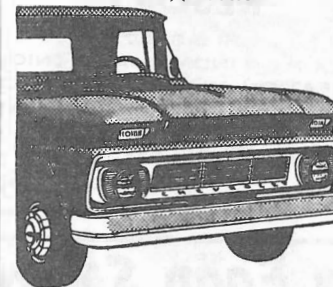
NOW! AT HATCH CHEVROLET

HOOCHIE

HOMECOMING SALE



- ★ Chevrolets
- ★ Chevy II's
- ★ Corvairs
- ★ Trucks



EXPLANATORY NOTE: It's unprecedented for the same firm to get "Hoochie" twice. This has never happened before — much less within the same year. Therefore, in answer to many requests, we frankly answer the following questions.

Q. IS HOOCHIE REALLY BACK?

A. YES . . . AND FURTHERMORE HOOCHIE WILL " . . . EXIST SOLELY ON THE PREMISES OF HATCH CHEVROLET."

Q. WHERE DID HOOCHIE GO?

A. ON BUSINESS.

Q. DID HOOCHIE RETURN WITH ANYTHING UNUSUAL?

A. DEFINITELY. WE CAN'T SAY FOR SURE — BUT COINCIDENTALLY, WE HAVE RECEIVED STAGGERING FACTORY SHIPMENTS AND FOR THE FIRST TIME THIS YEAR, WE CAN NOW OFFER COMPLETE SELECTION OF NEW CHEVROLET CARS AND TRUCKS.

Q. CAN YOU DESCRIBE A HOOCHIE?

A. YES, BUT DON'T CONFUSE IT WITH A "TUEY."

**LOW
AS**

\$295⁰⁰
DN.

**PAY
ONLY**

\$48²²MO.

With one-third
down or equivalent trade.

The-lowest-overhead-
cost-per-car-dealer-
of-them-all.

Closed Sunday
Because it is Sunday)



850 El Cajon Boulevard

HI 2-0201